

# Deanta

Defining the Perfect Finish

The Primed Collection





# Deanta

Defining the Perfect Finish

Welcome to the Primed Collection by Deanta. It features a large selection of primed doors and accessories ready for installation.

Each door is a solid core, engineered door and so will not shrink, bend warp or split when installed in accordance with our instructions. This range of doors features both glazed, unglazed doors and fire doors,

The door range is complemented by an extensive range of primed skirting and architrave available in five different styles from classic victorian to the thoroughly modern angled range.

Our skirting and architrave is manufactured from moisture resistant MDF so a long life free from warping, splitting and bending is guaranteed.

Our Primed Collection has been factory primed to a high level so that one good coat of paint is all that is needed for a final finish.

## FEATURES

### ● One Coat Finish

Each item in the Primed Collection has been factory primed to ensure that one coat of paint is all it takes to finish the door.

### ● Solid Core Door

Each Door is a solid door and has been precision manufactured to ensure a long life free from warping, splitting or bending.

### ● Moisture Resistant

Our skirting and architrave is made from moisture resistant MDF so will not warp, bend or split when installed correctly.

### ● Glazed Doors

Most of the doors in the range have a glazed counterpart so you can mix and match and achieve the look you want.

### ● Fire Doors

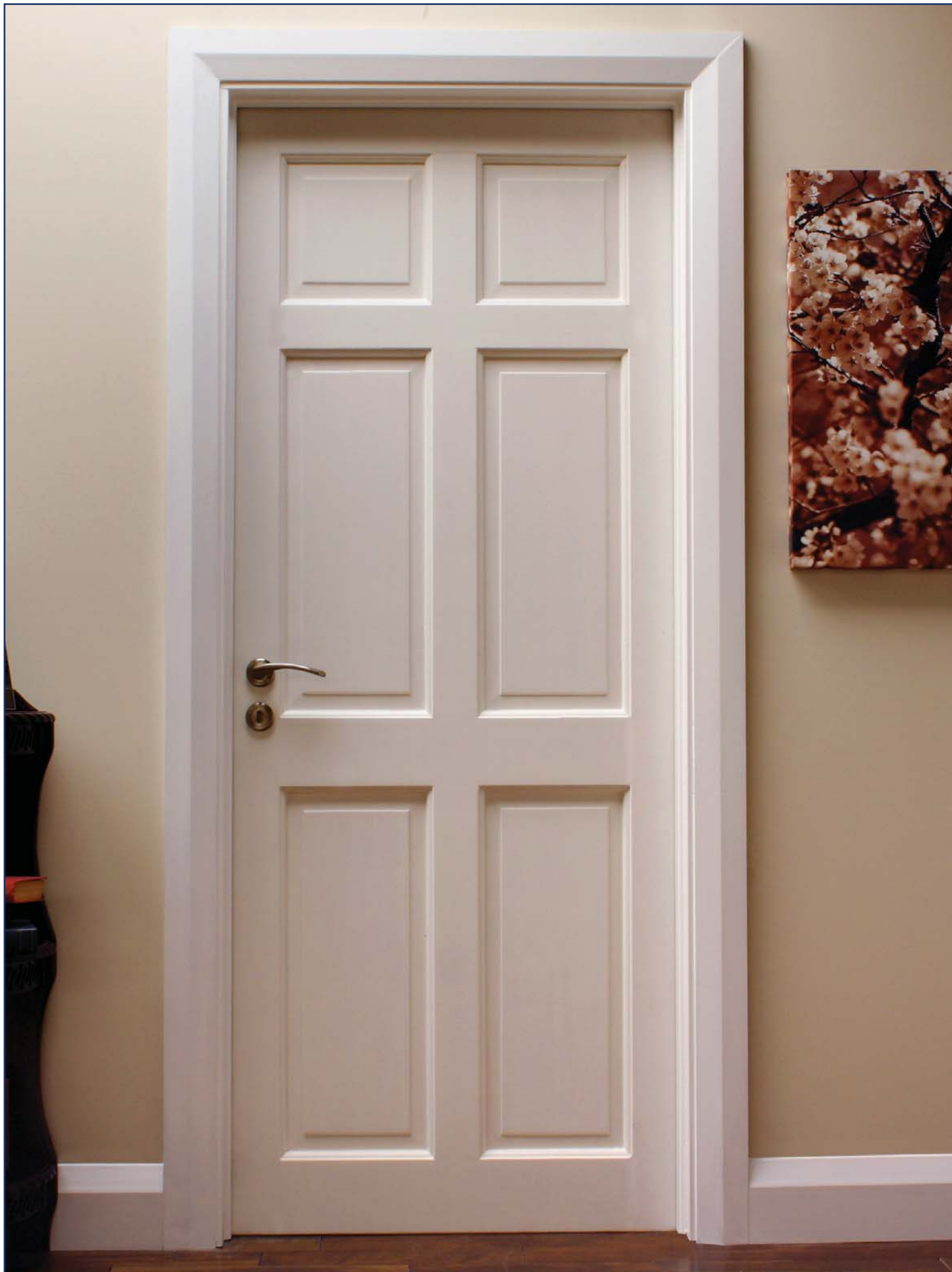
The Primed Collection features a fire door which, when installed will give you and your family valuable time to act in the event of a fire.

# PRIMED ACCESSORIES RANGE



## Accessories

- Top left:** Ulysses skirting & Architrave
- Top right:** Wells skirting & Architrave
- Mid left:** Victoriana skirting & Architrave
- Mid right:** Shaker skirting & Architrave
- Bottom left:** Angled skirting & Architrave



Door shown above is the 6 panel VR3 set in Angled skirting and architrave. This classic door features 6 raised panels.



Door shown above is the 4 panel glazed **WR20G** set in **Victoriana skirting and architrave**. The WR20G boasts detailed raised bolection moulding and raised panels. This door is supplied unglazed allowing you to specify the glass of your choice.



Door shown above is the 4 panel **WR1** set in **Wells skirting and architrave**. This door features raised bolection moulding and raised panels.



Door shown above is the 4 panel glazed **WR1G** set in **Wells skirting and architrave**. The WR1GFR boasts detailed raised bolection moulding and raised panels. This door is supplied unglazed allowing you to specify the glass of your choice.



Door shown above is the 4 panel glazed **VR2G** set in **Ulysses skirting and architrave**. This door is supplied unglazed allowing you to specify the glass of your choice. The glazed panels feature a delicate curve.

Door shown above is the 4 panel **VR2** set in **Ulysses skirting and architrave**. This classic door has 4 raised panels, the upper pair featuring a delicate curve.

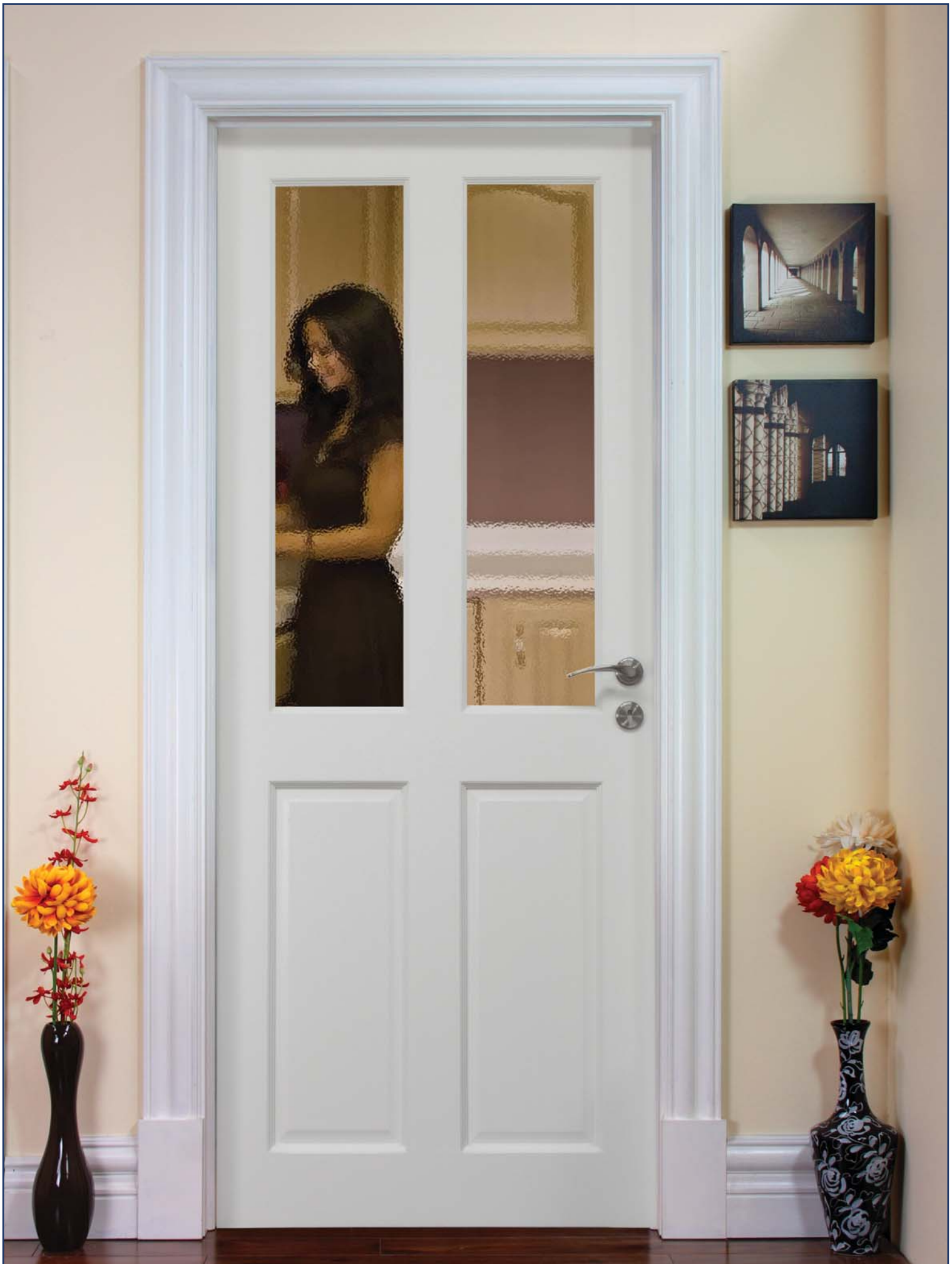


Door shown above is the **Shaker NM6G** door set in **Ulysses skirting and architrave**. The NM6G is supplied with toughened clear or frosted glass.

Door shown above is the **Shaker NM5** door set in **Ulysses skirting and architrave**.



Door shown above is the **WM4** door set in **Victoriana skirting and architrave**. The WM4 door is a classic four panel door equally at home in modern or contemporary settings.



Door shown above is the **WM4G** door set in **Victoriana skirting and architrave**. The WM4G door is a classic four panel door equally at home in modern or contemporary settings. This door is supplied unglazed allowing you to specify the glass of your choice



Door shown above is the 4 panel **VR20G** set in **Wells skirting and architrave**. Sweeping curving panels give the VR20G a timeless appeal. This door is supplied unglazed allowing you to specify the glass of your choice.



Door shown above is the 4 panel glazed **WR1FR** set in **Shaker skirting and architrave**. The **WR1GR** boasts detailed raised bolection moulding and flat panels. The **WR1FR** is a 30 minute fire door.



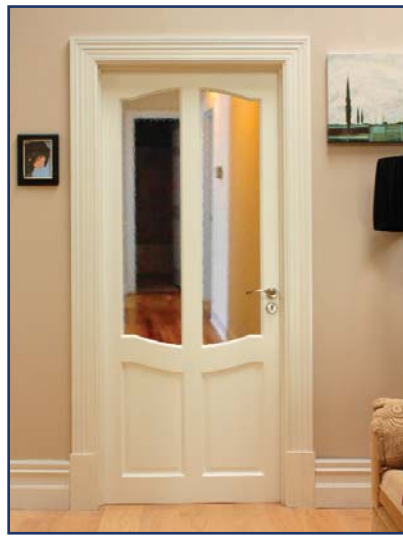
Door shown above is the 2 panel **NM3** set in **Angled skirting and architrave**. This two panel door is timeless in its appeal and will fit complement a wide range of decor.



Door shown above is the NM3GB set in Shaker skirting and architrave. This door features six glazed panels, each supplied with clear bevelled glass.

## Limited 12 Months Warranty on Deanta Doors

Deanta guarantees that Deanta doors are free from manufacturing defects in materials and workmanship for a period of twelve months from its original purchase. Any visible faults or defects must be reported prior to installation. Failure to report any defects prior to installation will result in voiding of the warranty. Deanta guarantees that for a period of twelve months after purchase that a Deanta door will not warp, shrink or split if it is stored and installed with respect to the care and installation guidelines available on [www.deantawood.com](http://www.deantawood.com). Under our Guarantee, our liability is limited to replacing the door and no liability is accepted for any consequential costs. Deanta's maximum liability under this Limited Warranty is limited to the original purchase price of the Deanta door. Deanta will not pay for labour or cost of labour to remove, install or finish any replacement door. In no event will Deanta be liable for incidental or consequential damages, whether based on breach of express or implied warranty, breach of contract, negligence, strict liability or any other legal theory. This Limited Warranty extends only to the original purchaser of the Deanta door and commences on the date of purchase of a Deanta door. This warranty is non transferable.



## Exclusions from Coverage

This warranty does not cover damage or defects relating to:

- Misuse, abuse, or accidental glass breakage.
- Normal wear and tear or natural weathering of surfaces.
- Acts of nature (e.g. fire, hurricane, flood, etc.).
- Improper storage, handling, installation or finishing.
- Failure to follow Deanta's guidelines for care and installation of your doors.
- Water or air infiltration damage due to installation errors or flaws in building design or construction.
- Exposure to chemicals, acids, fumes, salt spray or other corrosive substances.
- Doors altered by others that contribute to door failure.
- Incompatibility of hardware with a particular door construction.

**All claims must be made in writing and accompanied by original proof of purchase to the place of purchase. Deanta will not consider any claims unless they are communicated through place of purchase.** After receiving notice of a claim, Deanta must be given a reasonable opportunity to inspect and verify the claim. To expedite the claims process, please provide the following:

1. Description of door.
2. Name and address of owner.
3. Proof of purchase.
4. Description of defect.

# SPECIFICATIONS

The doors in the Deanta primed range are available in two standard sizes

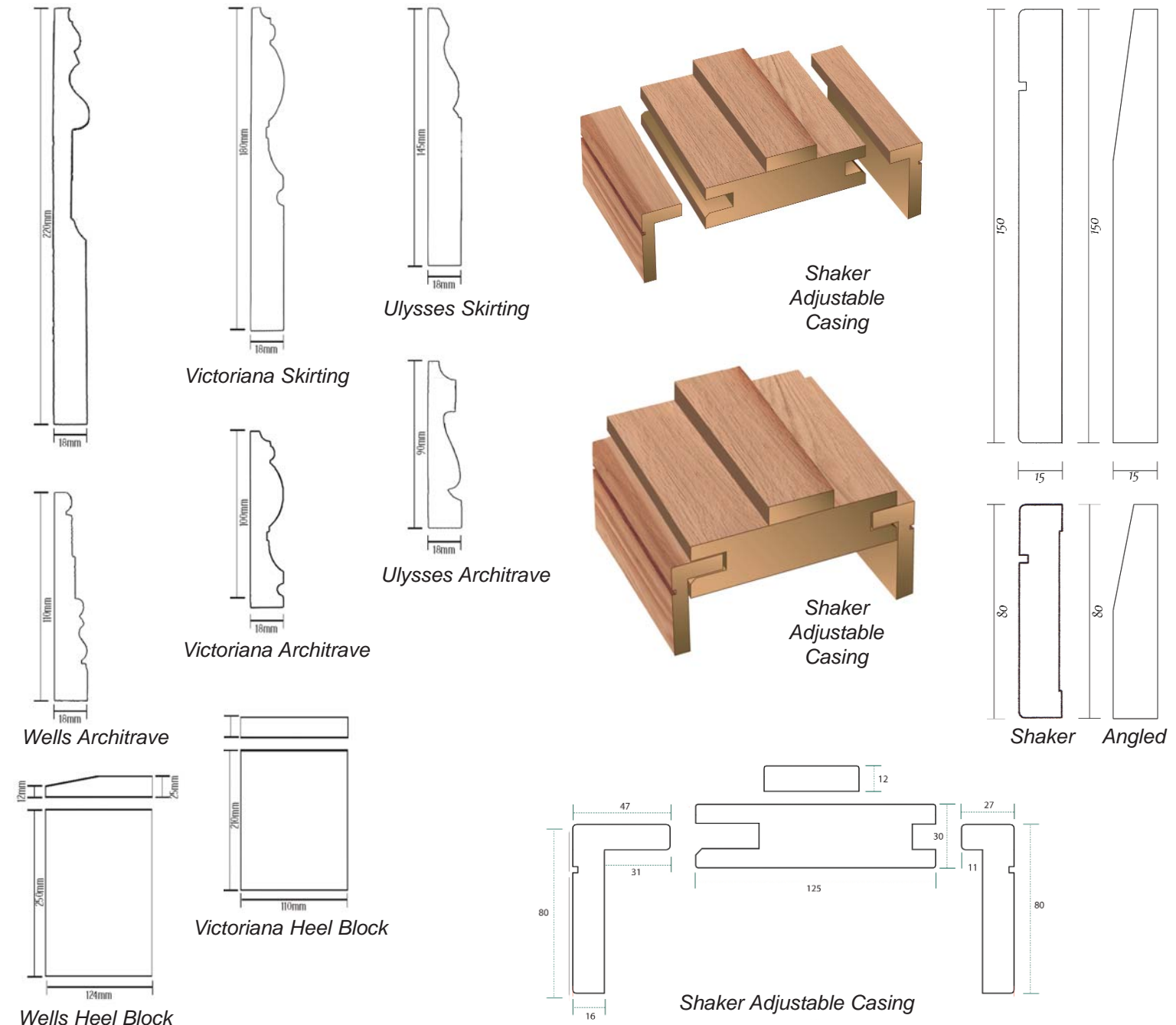
FEET	METRIC	INCHES
6 ft 6 inches X 2 ft 6 inches	1981mm X 762mm	78 inches X 30 inches
6 ft 8 inches X 2 ft 8 inches	2032mm X 813 mm	80 inches X 32 inches

## ACCESSORIES

**PRIMED RANGE - ULYSSES, VICTORIANA AND WELLS** - The Ulysses, Victoriana and Wells skirting is supplied as 5.4 metre lengths. The corresponding architrave comes in a complete set that covers both sides of your door.

**PRIMED RANGE - SHAKER AND ANGLED** - The Shaker and Angled skirting is supplied as 3.6 metre lengths. The corresponding architrave comes in a complete set that covers both sides of your door.

**OAK AND WALNUT RANGE** - All oak and walnut skirting (*including Wells and Victoriana*) is supplied as 3.6 metre lengths. The corresponding architrave comes in a complete set that covers both sides of your door.



# Deanta

DEFINING THE PERFECT FINISH



[www.deantawood.com](http://www.deantawood.com)

TO SEE THE FULL DEANTA RANGE OF DOORS  
REQUEST A COPY OF OUR CATALOGUE FROM  
YOUR LOCAL DEALER OR DOWNLOAD IT FROM

[www.deantawood.com](http://www.deantawood.com)

**Your Local Stockist is:**

Deanta Wood, Curraheen, Tralee, Co Kerry  
Tel: 066 7194828 | Fax: 055 7124200  
Email: [sales@deantawood.com](mailto:sales@deantawood.com)  
[www.deantawood.com](http://www.deantawood.com)